

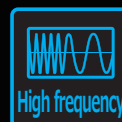
# 24GHz Short Range Multi Mode Radar



Safety



Comfort



**FURUKAWA**  
ELECTRIC GROUP

## Applications

Short-range monitoring systems for ADAS

ADAS : Advanced Driver Assistance Systems

## Features

Adoption of the world's first pulse-type short-range radar system enables:

- High separation performance
- Outstanding ease of installation

## Automotive-friendly performance

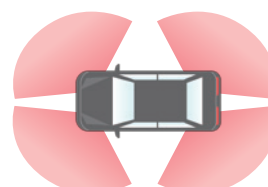
Accurate recognition under a wide range of environments, including rain, snow and nighttime

### Appearance

Next-generation model (under development)



### Detection range



RCTA (when reversing)

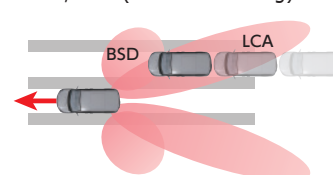


FCTA (when advancing)



### Incorporated features

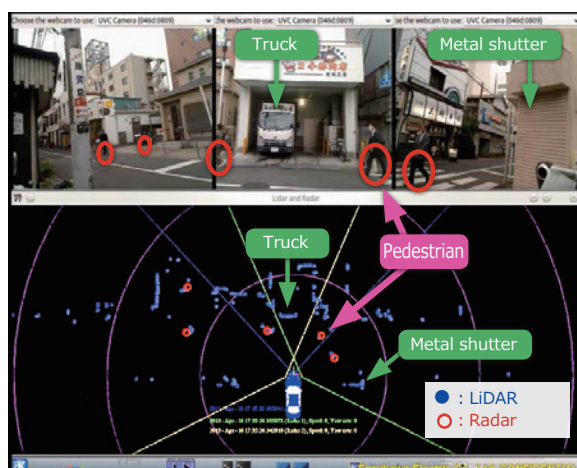
BSD, LCA (when advancing)



- RCTA: Rear Cross Traffic Alert
- BSD: Blind Spot Detection
- LCA: Lane Change Assist
- FCTA: Front Cross Traffic Alert

## How We Did It

### High separation performance

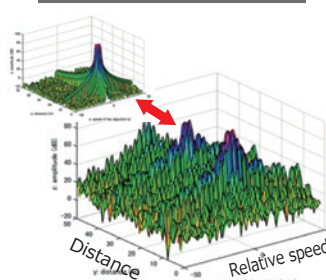


**People can be distinguished even in conditions of strong reflection**

Even when highly reflective phenomena (trucks, metal shutters, etc.) are nearby, the positions of low-reflectivity phenomena such as pedestrians can be accurately detected

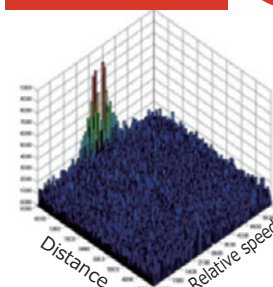
### Outstanding ease of installation

#### Competitor product



Detection is uncertain due to the influence of bumper shape and surrounding parts

#### Furukawa Electric product



**Detection is little influenced by the bumper, so the product is easy to install**

Installation was designed using signal simulations, enabling CAD-level prediction of performance

Start of world's first mass production of pulse-type radar

**FURUKAWA**  
**ELECTRIC**

**FURUKAWA AUTOMOTIVE SYSTEMS INC.**

Inquiries on Automotive Parts : fec.fws-sales@furukawaelectric.com TEL : +81-3-3286-3355

About export control regulations: The products and technical information listed in this document may be subject to the Foreign Exchange and Foreign Trade Control Act and Related Ordinances of Japan, as well as the Export Administration Regulations (regulating re-exports) of the United States. Customers who wish to export or re-export the products and technologies listed in this document are asked to complete the necessary procedures at their own responsibility and expense. For detailed information on procedures, please contact the Ministry of Economy, Trade and Industry (METI) of Japan or the Department of Commerce of the United States.